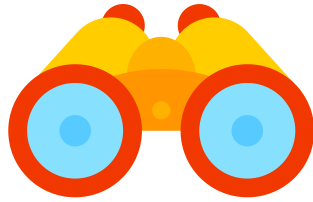


# Vocabulary words

## Kindergarten



**Binoculars**



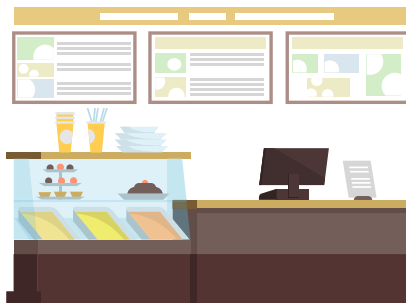
**Bus**



**Tent**



**Fishing**



**Cafeteria**



Text is under a [CC BY-NC 4.0](https://creativecommons.org/licenses/by-nc/4.0/) licence. Graphics designed with Canva are under [Canva's content licence](https://www.canva.com/branding/content-licences/).  
© OFF-TRAIL program by Centre RBC d'expertise universitaire en santé mentale (2025), Université de Sherbrooke.

Financial contribution from



Public Health Agency of Canada  
Agence de la santé publique du Canada

Centre intégré de santé et de services sociaux de la Montérégie-Centre  
Québec

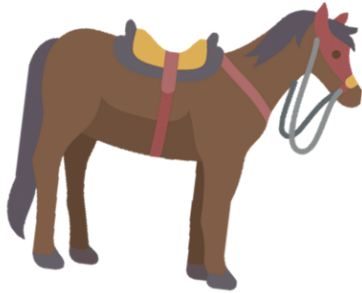
UDS Université de Sherbrooke



Centre RBC d'expertise universitaire en santé mentale

# Vocabulary words

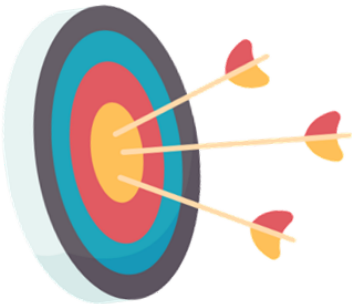
## Kindergarten



**Horse to go  
trail riding**



**Log cabin**



**Archery**



**Campfire and  
marshmallows**



**Magnifying  
glass**



Text is under a [CC BY-NC 4.0](https://creativecommons.org/licenses/by-nc/4.0/) licence. Graphics designed with Canva are under [Canva's content licence](https://www.canva.com/branding/content-licences/).  
© OFF-TRAIL program by Centre RBC d'expertise universitaire en santé mentale (2025), Université de Sherbrooke.

Financial contribution from



Public Health Agency of Canada  
Agence de la santé publique du Canada

Centre intégré de santé et de services sociaux de la Montérégie-Centre  
Québec

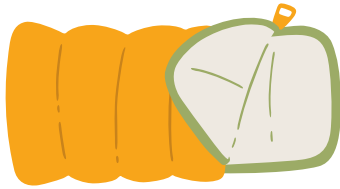
UDS Université de Sherbrooke



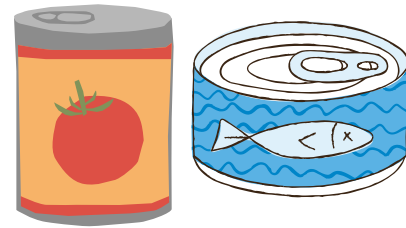
Centre RBC d'expertise universitaire en santé mentale

# Vocabulary words

## Kindergarten



**Sleeping bag**



**Canned food**



**Walkie-talkie**



Text is under a [CC BY-NC 4.0](https://creativecommons.org/licenses/by-nc/4.0/) licence. Graphics designed with Canva are under [Canva's content licence](https://www.canva.com/branding/content-licensing/).  
© OFF-TRAIL program by Centre RBC d'expertise universitaire en santé mentale (2025), Université de Sherbrooke.

Financial contribution from



Public Health Agency of Canada  
Agence de la santé publique du Canada

Centre intégré de santé et de services sociaux de la Montérégie-Centre  
Québec

UDS Université de Sherbrooke



Centre RBC d'expertise universitaire en santé mentale